

**OEM**  
 OEM SENSOR

## Model OEM LPC2410 Double-Ended Load Pins with Shackle

**Capacity: 3t...55t**
**Output Signal : 1.5mV/V, Option 4...20mA, 0.5...4.5VDC, 0/1...5VDC**

### Features

- for the measurement of tension ropes
- suitable for retrofitting
- integrated amplifier
- IP66
- bonded foil strain gauges
- corrosion free stainless steel
- small temperature drift
- high long term stability

### Applications

- crane scales
- hopper weighing
- onboard vehicle weighing
- lifting and weighing in rugged

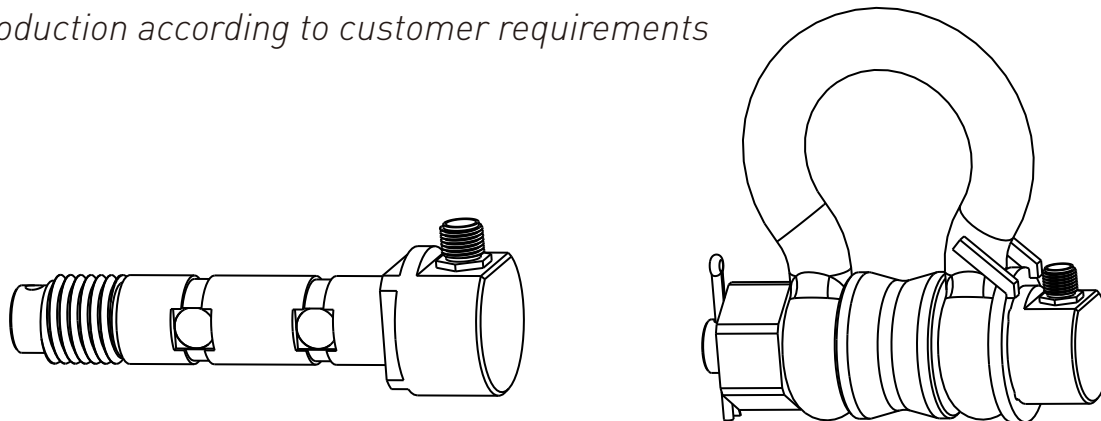
### Technical specifications

Capacity	3t, 6.5t, 12t, 25t, 55t
Accuracy class	G10
Output sensitivity	1.5 ± 1% mV/V, Option 4...20mA, 0/1...5VDC, 0.5...4.5VDC
Linearity Error	0.5%F.S
Non-Repeatability	0.05%F.S
Combined error	1%F.S
Hysteresis	≅ ± 0. 1%F.S
Creep	≅ ± 0. 1%F.S/30min.
Zero balance	1%F.S
Temp. effect on sensitivity	0.03%F.S/10°C
Temp. effect on zero	0.07%F.S/10°C
Temp. compensated	-10...+40°C
Operating Temp.	-20...+60°C
Input resistance	800 ± 50Ω
Output resistance	750 ± 5Ω
Insulation resistance	≧ 5000MΩ@50VDC
Excitation, Recommended	5...12VDC
Excitation, Max	18VDC
Safe overload	150%F.S
Ultimate overload	300%F.S

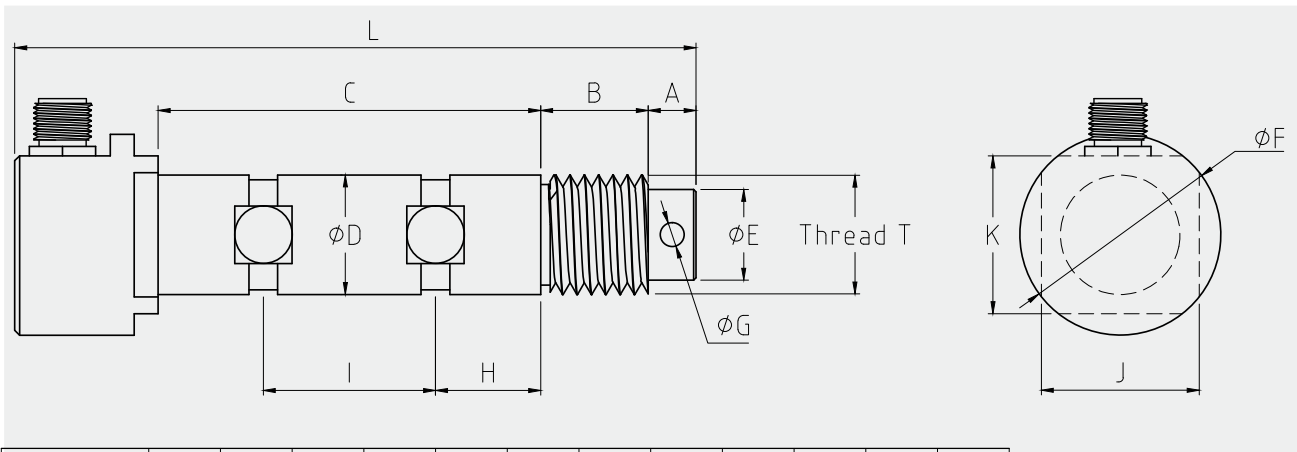


### Dimensions(in mm)

*Production according to customer requirements*



This data sheet contains product specification, properties are not guaranteed. Subject to change without notice.



Capacity(t)	A	B	C	D	E	F	G	H	I	J	K	L
3t	10	16	59	19	13	32	5	16	27	25	26	115
6.5t	10	22.5	80	25	19	42	5	22	36	33	34	142.5
12t	15	31.5	115	35	25	52	8.5	32	51	41	42	191.5
25t	20	46	165	50.8	42	63	11	46	73	54	55	266
55t	25	63	235	70	62	88	15	65	105	74	75	358

Photo  
Model OEM LPC2410 Double-Ended



This data sheet contains product specification, properties are not guaranteed. Subject to change without notice.